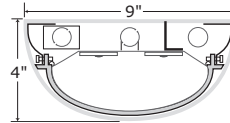
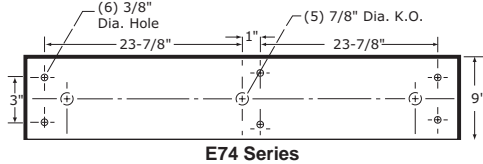
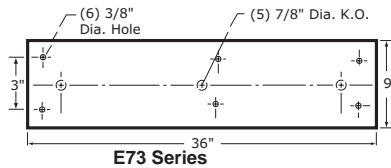
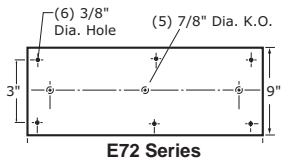




# High Abuse Bi-Pin FL and LED Collection

## E71 · E72 · E73 · E74

High Abuse Ceiling LED Luminaire



Catalog Number

Project Name & Location

Type



**ARRA**  
Compliant

### Product Specifications

**DRIVER:** 120 or 277 Volt electronic driver [UNV] with standard 0-10V low voltage dimming.

**FINISH:** Housing parts are 5 stage-pretreated and finished in white polyester powder coat. Optional Natatorium Coating [NTC] is available.

**HOUSING:** Extruded aluminum with internal reinforcements of double thick cast aluminum ends for the most strength and rigidity. Tamper-proof torx screws secure end caps. All metal parts are 5-stage pre-treated.

**LAMP:** [LED] Light Emitting Diode.

**LENS:** U.V. stabilized .130" thick clear frosted polycarbonate lens [CFP] – Standard.

**LENS FASTENERS:** 4 screws to secure lens in

place [2 per side].

**REFLECTOR:** Formed aluminum with multiple bends for max rigidity and unitising all electrical components.

**BACK BOX:** Back Box Conduit Adapter [CA] Option required for Integral and Remote Emergency Battery, and specific LED Wattages.

**COMPLIANCE:** Built according to US. and Canadian safety standards. Complies with Buy American Act. IP65 Rated and Suitable For Wet Location Covered Ceiling. Wall Mount - Damp Location; requires shielding to maintain wet listing.

**LONG LIFE:** 50,000 hour LEDs at L80 reduce life cycle maintenance cost.

### order example:

**E74-CFP-LED50-CT4-UNV-WHT**

#### SERIES

E71	1 Foot Linear E71 Series
E72	2 Feet Linear E72 Series
E73	3 Feet Linear E73 Series
E74	4 Feet Linear E74 Series

#### LENS

CFP Clear Frosted Polycarbonate (Standard)

#### LED WATTAGE

SERIES	LED
E71	20w 30w
E72	20w 40w
E73	20w 40w 50w 60w
E74	20w 40w 50w 60w 80w 100w

Delivered Efficacy: ±130 LPW

#### LED COLOR TEMPERATURE

CT3	±3000K LED Color Temp
CT35	±3500K LED Color Temp
CT4	±4000K LED Color Temp
CT5	±5000K LED Color Temp
CT65	±6500K LED Color Temp

#### VOLTAGE

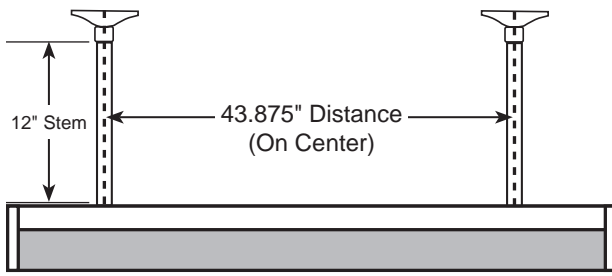
120	120 Volts
277	277 Volts
347	347 Volts
UNV	120-277 Universal Volt Electronic Driver – Standard 0-10V Low Voltage Dimming (30-100%) – Must Specify Voltage for EM option
2UNV	Two 120-277 Universal Volt Electronic Drivers – Standard 0-10V Low Voltage Dimming (30-100%) – Must Specify Voltage for EM option

#### FINISH

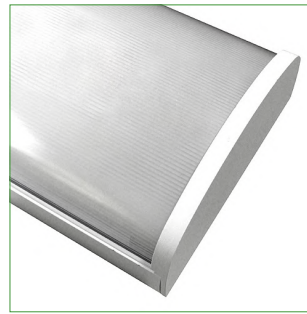
BK	Black
BZ	Bronze
WHT	White Finish Standard
NTC	Natatorium Coating

#### OPTIONS

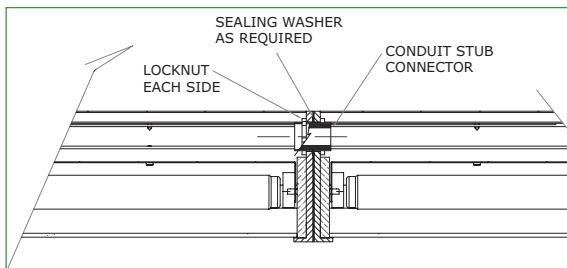
OPTIONS on 2nd Page



E74 Shown with Pendant Mount Option (PM)



Clear Prismatic Polycarbonate Lens (CL)

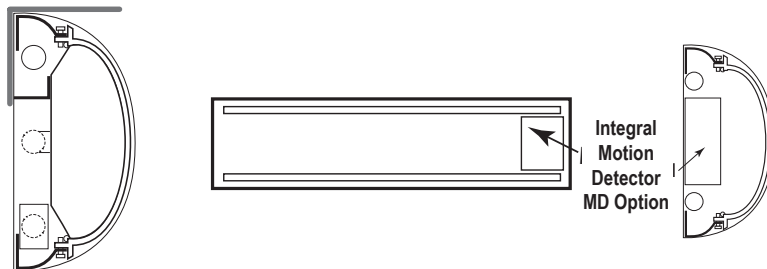


Instructions for Joining Units for Tandem Mount



Tandem Mount [TM]

Shown with WMSH Option



Integral Motion Detector MD Option

Catalog Number

Project Name & Location

Type



**ARRA**  
Compliant

order example:  
E74-CFP-LED50-CT4-UNV-WHT

**OPTIONS**

0-10D	0-10V Low Voltage Dimming - STANDARD - (30-100% Dim Levels)
8DIM	LED Dimming Forward Phase (TRIAC)
13DIM	LED Step Dimming (Consult Factory)
CA	Aluminum Conduit Adapter/Back Box *Required for Emergency Battery Options. Consult Factory for Specific Criteria.
CL	Clear Prismatic Polycarbonate Lens
DLC	Design Lights Consortium - Compliant (PENDING)
FUS	Fuse and Fuseholder
FUS2	Double Fusing
GN	Generator Transfer Device
H/L1	High/Low LED Light Level - Single AC-Input Feed / Switch Sensor (Required)
H/L2	High/Low LED Light Level - Wired for Dual AC Input Feeds
MD	Internal Motion Detector (Single Circuit) - Specify "A" for Steps: 0% - 100% - 0% - Specify "B" for Steps: xx% - 100% - xx% - Specify "C" for Steps: 0% - xx% - 100% xx% = LOW Level and/or STANDBY Dimmed Levels Options: 50% / 30% / 20% / 10% - Max Mounting Height of Fixture is 18 Feet
PM	Pendant Mount [Two 12" Length Stems Standard] *43.875" Distance (On Center) between Stems
RMT	Wireless PIR Remote Control
SU	Surge Protection for LED fixtures
TM	Tandem Mount (E74 Only) - Specify Length: 8', 12' or Custom Length
TPS	Tamperproof Screws
WMSH	Wall Mount Shield - Required for Outdoor Wet Location
WMT	Wall Mount - Damp Only (Requires WMSH)

**EMERGENCY BATTERY OPTIONS**

- No Onsite Emergency (AC / DC) is Provided
- Must Specify Voltage: 120V / 277V
- Emergency Battery Options Meet California Energy Commission Title 20 [CEC-400-2014-009-CMF] Efficiency Standards  
- Cold Weather Batteries DO NOT meet CEC Standards
- Cold Weather Emergency Batteries Temp Range: -20°C thru 50°C

EM4W	Integral 4 Watt LED - 500 Lumens (E71/E72 Only)
EM8W	Integral 8 Watt LED - 1000 Lumens
EM16W	Integral 16 Watt LED - 2000 Lumens
EM10W- CW	Integral 10 Watt LED - Cold Weather - 1250 Lumens
REM7W- CW	Remote 7 Watt LED - Constant Power - 875 Lms
REM10W- CW	Remote 10 Watt LED - Constant Power - 1250 Lms
REM12W- CW	Remote 12 Watt LED - Constant Power - 1500 Lms

**Product Specifications**

**DRIVER:** 120 or 277 Volt electronic driver [UNV] with standard 0-10V low voltage dimming.  
**FINISH:** Housing parts are 5 stage-pretreated and finished in white polyester powder coat. Optional Natatorium Coating [NTC] is available.  
**HOUSING:** Extruded aluminum with internal reinforcements of double thick cast aluminum ends for the most strength and rigidity. Tamper-proof torx screws secure end caps. All metal parts are 5-stage pre-treated.  
**LAMP:** [LED] Light Emitting Diode.  
**LENS:** U.V. stabilized .130" thick clear frosted polycarbonate lens [CFP] – Standard.  
**LENS FASTENERS:** 4 screws to secure lens in

place [2 per side].  
**REFLECTOR:** Formed aluminum with multiple bends for max rigidity and unitising all electrical components.  
**BACK BOX:** Back Box Conduit Adapter [CA] Option required for Integral and Remote Emergency Battery, and specific LED Wattages.  
**COMPLIANCE:** Built according to US. and Canadian safety standards. Complies with Buy American Act. IP65 Rated and Suitable For Wet Location Covered Ceiling. Wall Mount - Damp Location; requires shielding to maintain wet listing.  
**LONG LIFE:** 50,000 hour LEDs at L80 reduce life cycle maintenance cost.

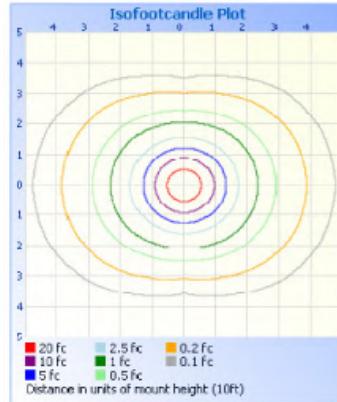
#### PHOTOMETRIC DATA

**Test # 103876548CHI-001**

**CATALOGUE #: E74-CL-LED100-CT5-2UNV-GC-WHT**

Test Date: 02/21/2019 — Tested in accordance with LM-79-80. The results contained in this summary report pertain only to the tested sample.

Test: 103876548CHI-001   Catalogue #: E74-CL-LED100-CT5-2UNV-GC-WHT   Test Date: 3/22/2019						
Lamp Output	Lumen Efficacy	Input Voltage	Input Current	Input Wattage	Power Factor	Color Temp
11,727.2 Lumens	119.5 LPW	120.0V	825.4mA	98.17W	0.992	5000K



**Test # 103842377CHI-002**

**CATALOGUE #: E74-CFP-LED100-CT5-UNV-WHT**

Test Date: 02/21/2019 — Tested in accordance with LM-79-80. The results contained in this summary report pertain only to the tested sample.

Summary of Results								
Lamp Output	Lumen Efficacy	Input Voltage	Input Current	Input Wattage	Power Factor	Delta UV (Duv)	Color Temp	CRI
12,791 Lumens	130.5 LPW	120.0V	818.6mA	98.02W	0.998	0.0006	5238K	83.8

