



The Parking Garage Collection

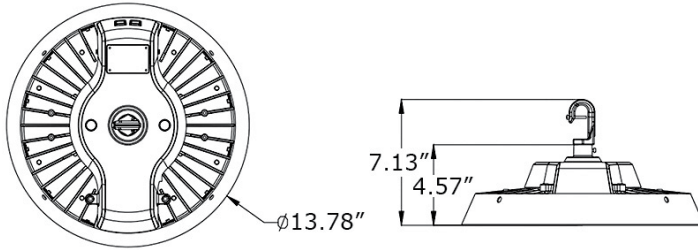
HBS3

LED High Bay Smart Luminaire



The Bluetooth® word mark and logos are registered trademarks owned by Bluetooth® SIG, Inc.

DIMENSIONS



REFLECTOR OPTIONS



Catalog Number	
Project Name & Location	Type

Product Specifications

DRIVER: Universal Voltage (120-277V) Electronic Driver. 0-10V Low Voltage Dimming.
FINISH: UV Stabilized powdercoat finish.
HOUSING: Heavy-Duty aluminum construction with no crevices/recesses or exposed screws.
LENS: Polycarbonate.
LIGHT ENGINE: Energy Efficient Light Emitting Diode.
BEAM ANGLE: 60° / 90° / 120° / 50x100° / Frosted Lens (120°).
COLOR RENDERING INDEX: +73 CRI.
OPERATIONAL TEMPERATURE (AMBIENT): -40°C to 45°C / -40°F to 113°F

POWER FACTOR: 0.95+.
MOUNTING: Aircraft Cable, Hook Mount, Pendant Mount (Standard 1/2" NPT), Optional 3/4" NPT Conduit Adapter, Trunnion Mount.
COMPLIANCE: Built to comply with U.S. and Canadian safety standards. ETL, cETL, FCC, CE, RoHS Certified. Tested IK10 Impact Testing according to IES 62262.2002. IP65 Rated. Buy American Act Compliant.
WARRANTY: 5-Year Limited Warranty.

ORDER EXAMPLE:

HBS3-PEND-CSW-SR-LED100-CT4-120D-UNV-BK-BLDA

SERIES

HBS3 High Bay Smart 3 Series

MOUNTING

- 34A 3/4" NPT Conduit Adapter
- ACM Aircraft Cable Mount
- HOOK Hook Mount
- PEND Pendant Mount - 6" Stem Standard (1/2" NPT)
 - For Other Stem Lengths, Consult Factory
Choose Pendant Canopy Style
 CSW-RR = Canopy Swivel for 4" Round J-Box
 - Rapid Mount with Hinged Door
 CSW-SR = Canopy Swivel for 4" Square J-Box
 - Rapid Mount with Hinged Door
- TRUN Trunnion Mount

LED WATTAGE

Note: Delivered Lumen Efficacy ±5%

- LED75 75 Watt LED - 10,586 Delivered Lumens
- LED100 100 Watt LED - 13,790 Delivered Lumens
- LED120 120 Watt LED - 20,825 Delivered Lumens
- LED145 145 Watt LED - 24,650 Delivered Lumens
- LED180 180 Watt LED - 32,000 Delivered Lumens

LED COLOR TEMPERATURE (CCT)

- CT3 ±3000K LED Color Temp (MOQ=10pcs)
- CT4 ±4000K LED Color Temp (MOQ=10pcs)
- CT5 ±5000K LED Color Temp

BEAM ANGLE / LENS

- 60D 60°
- 90D 90°
- 120D 120°
- 5010D 50°x100°
- FRS Frosted Lens (120°)

VOLTAGE

- 347 347 Volt
- 480 480 Volt
- UNV 120-277 Universal Volt Electronic Driver
 - Features Standard 0-10V Dimming

STANDARD FINISHES

BK Black

PREMIUM UPCHARGE FINISHES

- SG Silver Gray (MOQ=10pcs)
- WHT White (MOQ=10pcs)

HOUSING OPTIONS

HSS House Side Shield

MISC OPTIONS

UPL Uplight

REFLECTOR OPTIONS

- ALR Aluminum Reflector
- CPR Clear Polycarbonate Reflector
- FPR Frosted Polycarbonate Reflector

Additional Options on PAGE 2

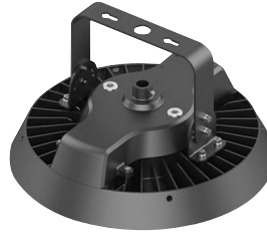
MOUNTING OPTIONS



3/4" NPT Conduit Adapter (34A)



Hook Mount (HOOK)



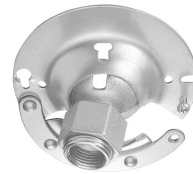
Trunnion Mount (TRUN)



Aircraft Cable Mount (ACM)



**Pendant Mount (PEND)
1/2" NPT**

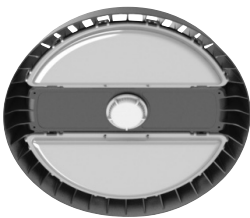


**Canopy Swivel 4" for Round/
Octagonal J-BOX (CSW-RR)**



Canopy Swivel 4" for Square J-BOX (CSW-SR)

PRODUCT OPTIONS



Frosted Lens (FRS)
Snap-On Installation
120° Beam Spread Only



Uplight Option (UPL)



House Side Shield (HSS)



Motion Sensor
Simple Plug-and-Play
Installation



Emergency Battery
Battery is stored in a separate
driver gear box.

SENSOR OPTIONS

DS Daylight Sensor
— Dims to Preset Illumination Level based on Ambient Light
— Light Can be Switched Off Manually

BLDA Motion Sensor
— Mounting Height: ≤ 40ft
— 360° Coverage
— Dimming Levels: 10% / 25% / 50%
— Built-in Photocell for Ambient Light Detection
— **Requires REMT0009 Option**

TELLELIGHT WIRELESS CONTROL SYSTEM Certified Bluetooth® Mesh Components & Topology Standard Fixture Options: (Questions? Consult Factory)

TSC3 Internal Fixture Controller
— McWong Model No.: PSC-WCM-50-BLE-SR
— External Antennae Cover
— TSC3 Requires Sensor

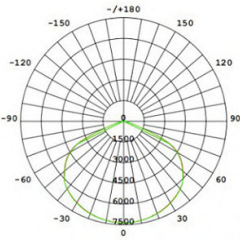
TSS14 Internal PIR low Bay Sensor w/External Lens
— McWong Model No.: PSC-BL-I-FM-DC0-BLE-SR

Emergency Battery Options **Note: Battery is stored in a separate driver gear box.** EL16W 16 Watt LED Emergency Battery

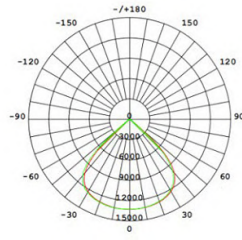
ACCESSORY OPTIONS Order As A Separate Line

REMT0034 Handheld Remote Control
— REMT0034 Required for BLDA Option

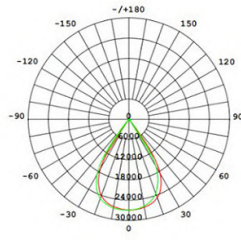
LED DISTRIBUTION TYPES



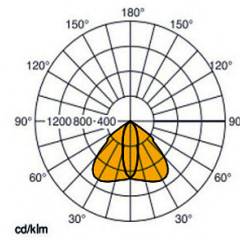
120° (120D)
Wide Angle



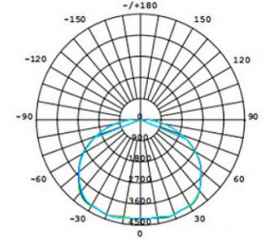
90° (90D)
Medium Angle



60° (90D)
Narrow Angle



50*100° (5010D)
Aisle Optic

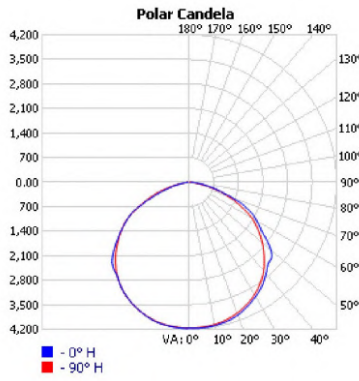


Dome Lens (DM)

PHOTOMETRIC DATA

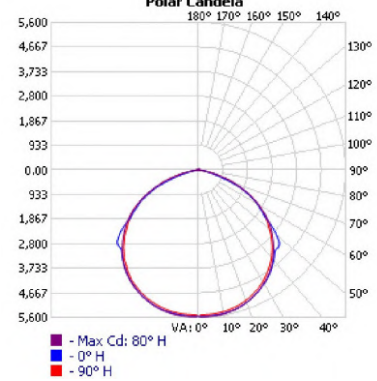
Summary of Results HBS3-LED75-CT5-120D					
Lumen Output	Efficacy	Input Power	CCT	Distribution	BUG Rating
10,586 Lumens	141.5 Lm/W	74.8W	5000K	Type VS	B3-U2-G1

Zonal Lumen Summary	
Zone	Lumens
0-30	2,885.7
0-40	4,741.4
0-60	8,439.0
60-90	2,150.3
70-100	842.4
90-120	15.7
0-90	10,589.3
90-180	22.3
0-180	10,611.5



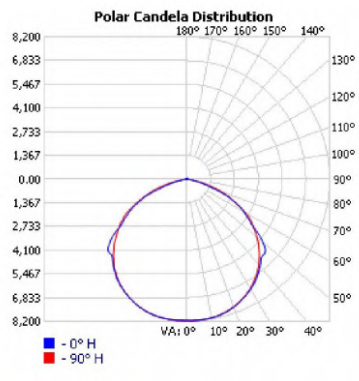
Summary of Results HBS3-LED100-CT5-120D					
Lumen Output	Efficacy	Input Power	CCT	Distribution	BUG Rating
16,581 Lumens	165.15 Lm/W	100.4W	5000K	Type VS	B3-U3-G1

Zonal Lumen Summary	
Zone	Lumens
0-30	4,458.4
0-40	7,418.9
0-60	13,475.3
60-90	2,985.3
70-100	956.2
90-120	33.5
0-90	16,460.6
90-180	118.8
0-180	16,579.4



Summary of Results HBS3-LED145-CT5-120D					
Lumen Output	Efficacy	Input Power	CCT	Distribution	BUG Rating
24,382 Lumens	162.8 Lm/W	149.8W	5000K	Type VS	B4-U3-G2

Zonal Lumen Summary	
Zone	Lumens
0-30	6,555.7
0-40	10,909.1
0-60	19,815.2
60-90	4,389.4
70-100	1,406.1
90-120	49.3
0-90	24,204.6
90-180	174.8
0-180	24,379.4



Summary of Results HBS3-LED180-CT5-120D					
Lumen Output	Efficacy	Input Power	CCT	Distribution	BUG Rating
28,880 Lumens	160.0 Lm/W	180.5W	5000K	Type VS	B4-U3-G2

Zonal Lumen Summary	
Zone	Lumens
0-30	6,555.7
0-40	10,909.1
0-60	19,815.2
60-90	4,389.4
70-100	1,406.1
90-120	49.3
0-90	24,204.6
90-180	174.8
0-180	24,379.4

